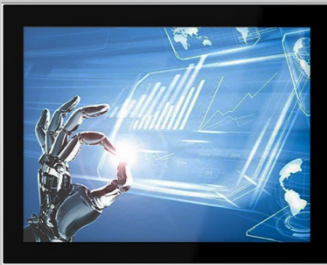


TPC-DCP150T

**15.0" PoE Panel PC with Intel Tiger Lake UP3;
Front IP66 rated; 5 GbE (4 PoE), 4 USB, 1 HDMI,
2 COM; Pcap. Touch; DC 9~36V; 1 Mini-PCle slot.**

Version: 3.0



Features:

- Modular & Fanless designed, aluminum-magnesium alloy;
- Intel 11th Gen. Tiger Lake UP3, Core i3/i5/i7 CPUs;
- 15.0" TFT LCD Display, LED Backlit, XGA 1024*768;
- Multi up to 10 points Pcap. touchscreen, EETI controller;
- DC 9~36V input, with over-current, over-voltage, polarity protection;
- I/O interfaces: 5 GbE (4 PoE), 4USB3.0, 2 COM, 1 HDMI;
- Intel PTTTPM2.0, Support Windows 11 OS;
- Panel mount, VESA 75/100 mount, Front IP66 rated protection;
- Optional 1 Mini-PCle Expansion slot.

Specification

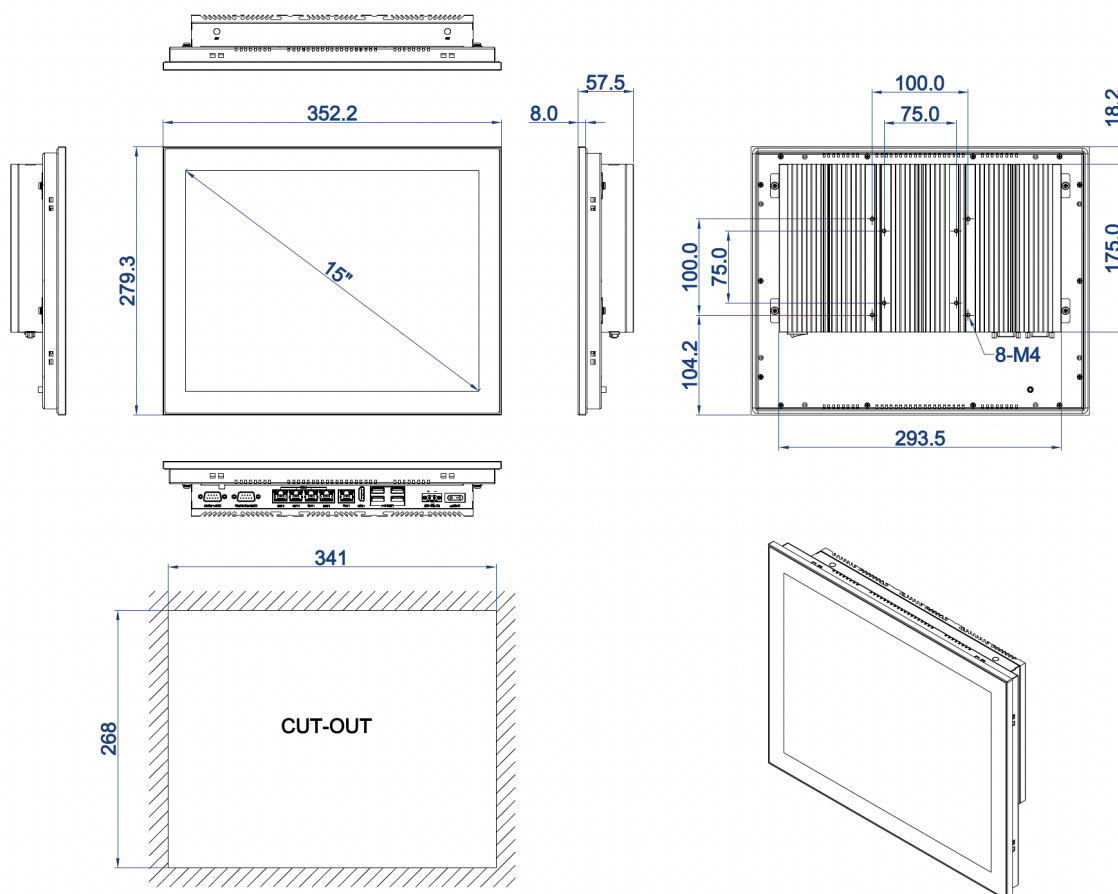


Hardware & System	BIOS	SPI AMI EEI BIOS
	CPU	Intel 11 th Gen. Tiger Lake UP3 Core i3-1115G4, Core i5-1135G7, Core i7-1195G7
	TDP	Default 15W (BIOS Configured)
	Graphic	Intel UHD/Iris Xe Graphics
	Memory	SO-DIMM, Support DDR4 3200 Mhz, Max. up to 32GB
	Storage	1* M.2 2280 M-Key SSD, 1* 2.5" SATA SSD
	Network	5* Intel i210AT, Optional wireless 3G/4G/LTE, Wi-Fi/BT
	Expansion	1* Full size Mini-PCle slot
	Watch dog	0 ~ 256 seconds programmable
Operating System	Win10, Win11, Linux, Ubuntu	
I/O Interface	Ethernet	5 RJ45, 10/100/1000 Mbps, 4 support PoE 802.3 AF (Single port max. up to 15.4W, total less than 45W)
	COM	1* RS232, 1* RS485
	USB	4* USB3.0
	Display	1* HDMI
	Power	1* 2 Pins, Phenix Terminal
LCD Display	Size/Type	15.0" TFT LCD Display
	Resolution	1024 * 768 (XGA)
	Brightness	350 nits
	Backlit & Lifetime	LED Backlit & 70K hours
	Display Area	304.1 * 228.1 (mm)
	View Angle	88/88/88/88
Touchscreen	Type	Projective capacitive touchscreen
	Touch points	Multi points touch, max. up to 10 points
	Durability	>100 000 000 times
	Surface Hardness	MOHS 6H
	Touch Controller	EETI
	Special Treatment	Anti-Fingerprint (AF)
Structure	Structure & Surface	Magnesium-Aluminum alloy, sand blasting, anodized treated
	Cooling System	Large area finned heatsink (Fanless designed)
	Overall Dimension	352.2 * 279.3 * 57.5 (mm)
	Cut-out Dimension	341 * 268 (mm)
	Net Weight	3.8 KG
	Mount Method	Panel mount, VESA 75/100 Mount
Power & Environmental	Operating temp.	-20 ~ + 60 (°C)
	Storage temp.	-30 ~ + 80 (°C)
	Humidity	10 ~ 95% @ 10C (No condensation)

Vibration	50 ~ 500 Hz, 1.5G, 0.15mm peak to peak
Shock	10G/Peak (11 ms)
Power input	DC 9~36V
Power consumption	About 40W
Certificate	CE/FCC/ROHS

Dimension (mm)

DIMENSIONAL DRAWING:TPC-DCP150T



DIMENSIONS IN MILLIMETERS

TAICENN
DATE:2022.11.29
REV:A Unit:mm

Ordering information

Part no.	Description		
TPC-DCP150T1	15.0" LCD, XGA 1024*768, Intel Core i3-1115G4, Pcap. Touch, 5 GbE (4 PoE), 4 USB3.0, 1 HDMI, 2 COM, DC 9 ~ 36V, No PSU by default		
TPC-DCP150T2	15.0" LCD, XGA 1024*768, Intel Core i5-1135G7, Pcap. Touch, 5 GbE (4 PoE), 4 USB3.0, 1 HDMI, 2 COM, DC 9~36V, No PSU by default		
TPC-DCP150T3	15.0" LCD, XGA 1024*768, Intel Core i7-1195G7, Pcap. Touch, 5 GbE (4 PoE), 4 USB3.0, 1 HDMI, 2 COM, DC 9~36V, No PSU by default		
Optional Accessories	Description	Packing List	
Memory	SO-DIMM, DDR4, <u>4GB/8GB/16GB/32GB</u>	Standard TPC-DCP150Tx Panel PC Product	1 set
Storage	SSD: <u>128GB/256GB/512GB/1TB/2TB</u>	Panel Mount Clips (Metal)	1 set (8 pieces)
Wireless	Wi-Fi Module, with Antenna	Power Cable & Plug	1 set
	Wi-Fi Module with BT Integrated, With Antenna		
	All Network 4G module, with Antenna		
Power Supply	PSU if needed		