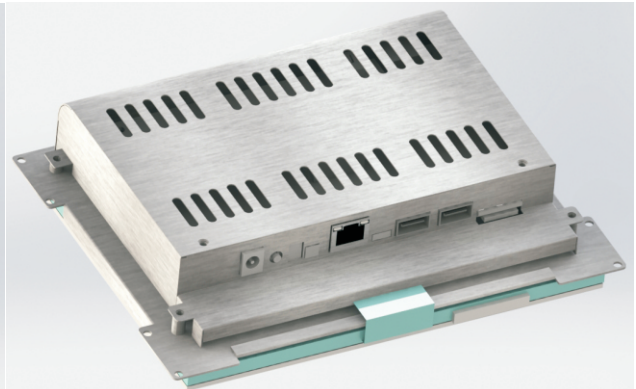


## Key Features:

- ★ Rockchip RK3288 quad-core processor (1.8Ghz)
- ★ 8" TFT LCD, Resolution: 800 x 600
- ★ Multi-points projective capacitive touch screen (10 points)
- ★ DDR 2G Memory, 8GB eMMC storage
- ★ Support TF Card, can expansion up to 32GB
- ★ I/O: DC\_in, UBOOT, IR, HP\_MIC, 1x RJ45, 2x USB 2.0, 1x OTG, TFT & Sim card slot



### System

Processor	: Rockchip RK3288 quad-core, 1.8GHz
Memory	: 2GB DDR3, Optional 1GB
Storage	: 8GB eMMC, Max. up to 64GB
Display	: Mail-764 GPU core

### I/O interface

Network	: 1↑Realtek RTL8211E Ethernet port
Wire-less	: Integrated WIFI/Bluetooth module
USB	: 2↑USB2.0 ports
Audio	: On-board 1 x 3.5mm earphone mic
Others	: 2*USB/1*LAN/1*DCIN /1* IR/ 1*OTG USB2.0/ 1*TF card slot

### LCD

Type & Size	: 8"TFT, Resolution: 800*600
Backlit	: LED / Lifetime 20 000 h
Brightness	: 250cd/m <sup>2</sup>
Display area	: 162 mm*121.5mm

### Touch

Type & Size	: 8" multi-points projective capacitive touch (10 points)
Touch constructin	: Glass
Overall size	: 139(W)*183(L) ±0.15mm
Active area	: 122.5(W)*163(L)±0.2mm
Thickness	: 1.85±0.1

### Insitutional

Box	: Stainless steel drawing process treatment
Mounting	: Open-frame
Overall size	: 199*148*40mm
Hole size	: 168*127mm
Weight	: ≤0.8kg

## Power and environmental

Operating temp. : -10~+50 °C

Power input : DC 12V

Storage temp. : -20~+70°C

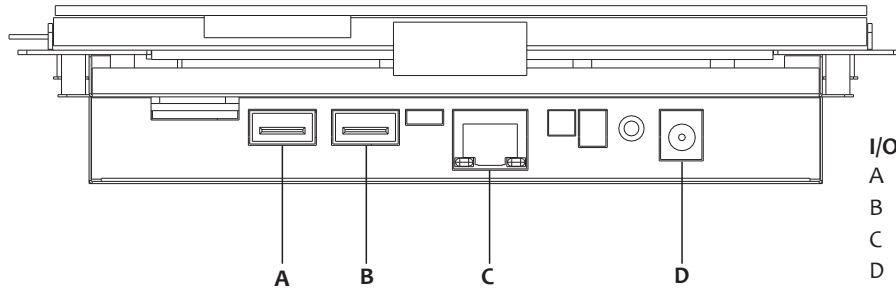
Power interface : DC2.5 port

Relative humidity : 10~95%@10°C ( non-condensation)

Vibration : 5~500Hz,1.5G,0.15mm peak to peak

Shock : 10G/peak (11ms)

## I/O



### I/O Definition :

- A : USB 2.0
- B : USB 2.0
- C : LAN
- D : DC IN

## Dimension

